

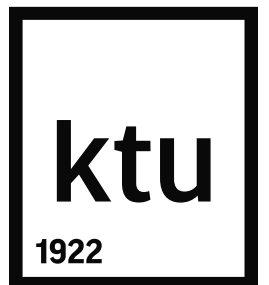
# Education for Sustainable Development: Example from KTU

Prof. Linas Kliučininkas

**Kaunas University of Technology (KTU), Lithuania**

**Course:** Sustainable Development, 6 credit points

**Coordinator:** Prof. Eglė Staniškienė, [egle.staniskiene@ktu.lt](mailto:egle.staniskiene@ktu.lt)

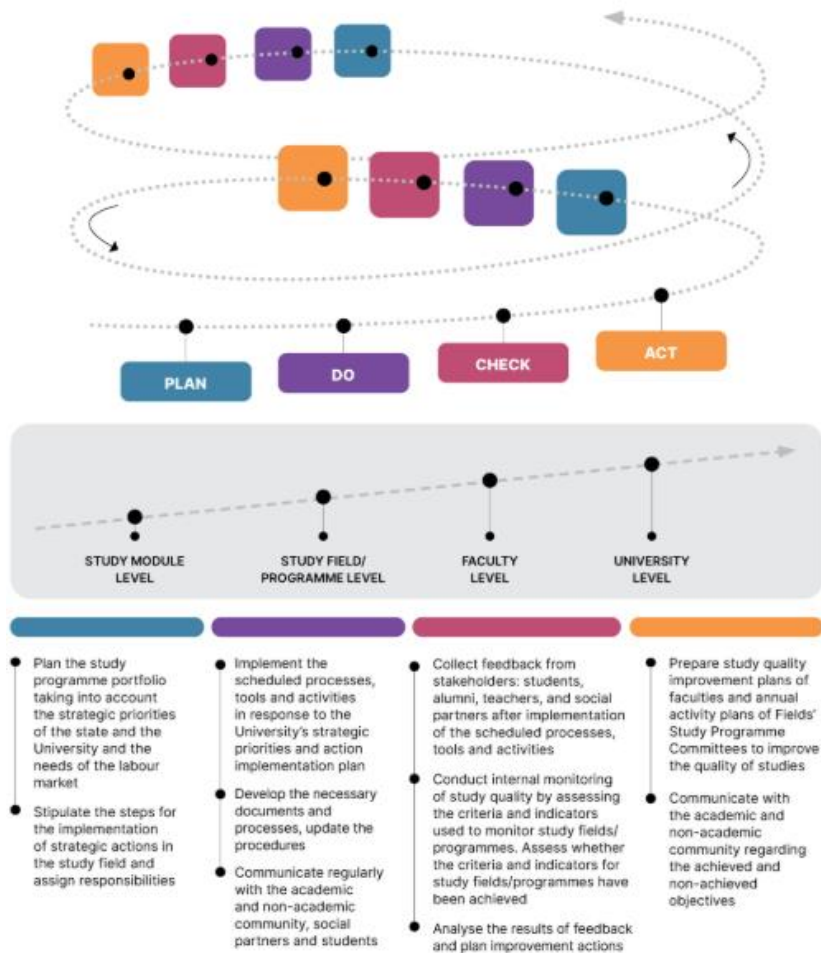


# Relevance of the course

## Why this course was developed?

KTU aims to develop the following general competences of students:

- critical / analytical thinking;
- creativity and communication;
- collaboration and problem solving skills;
- entrepreneurship and citizenship.

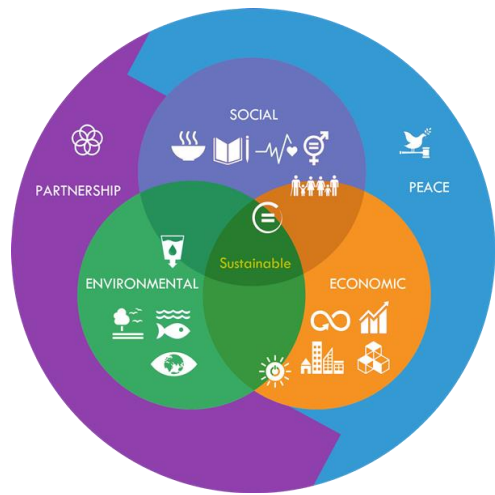


# Aim of the course

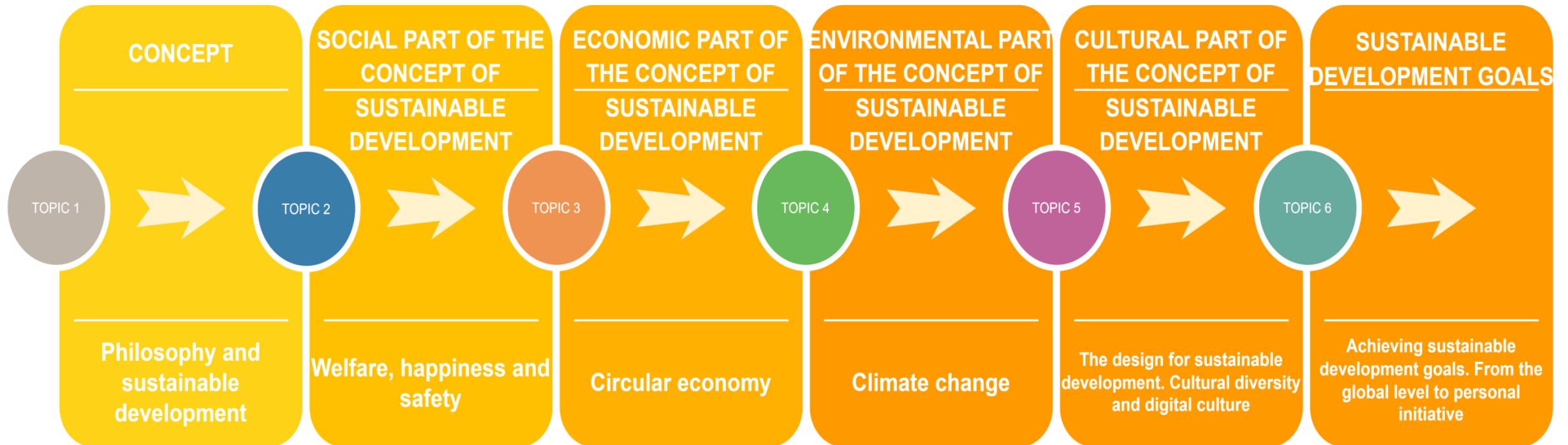


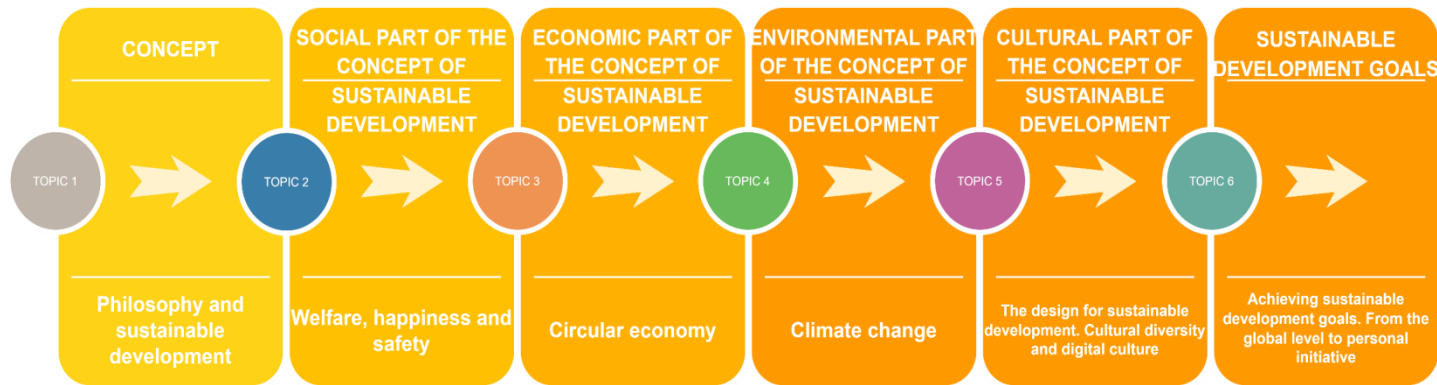
**Obtain global, critical and reflective awareness** of the social, economic, cultural and environmental context, in which the graduate will act, **educate conceptual and ethical position** based on the principles of sustainable development.

Global awareness



# Topics of the course



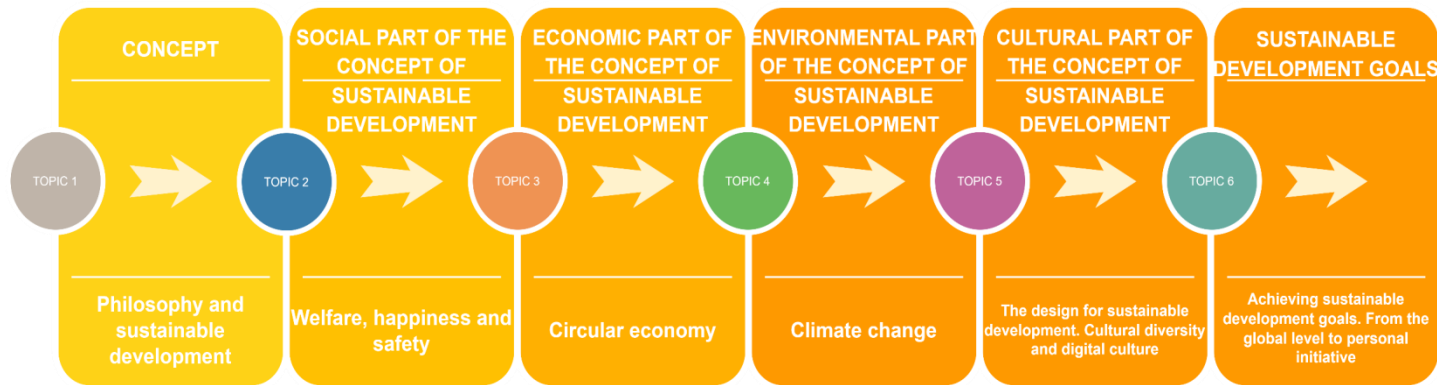


## TOPIC 1. Philosophy and Sustainable Development

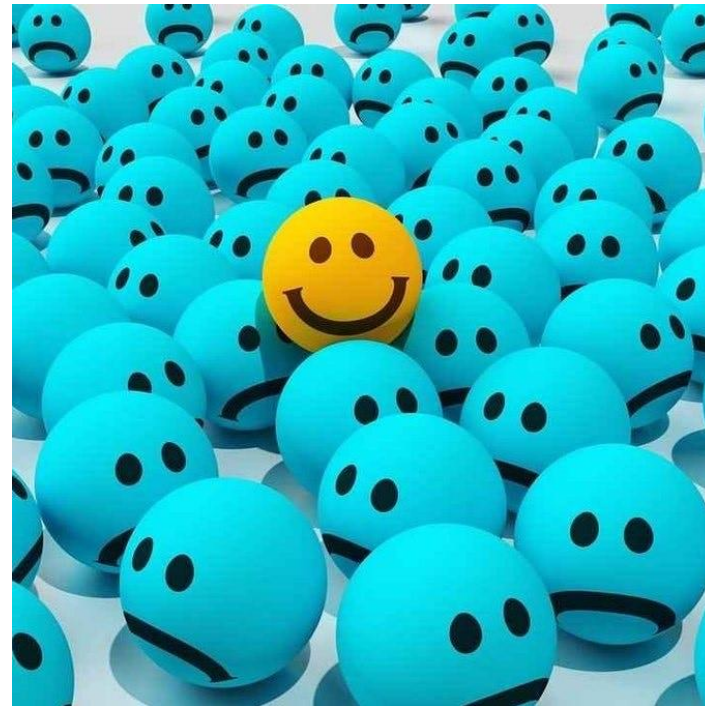
1. What is PHILOSOPHY?
2. What is the relationship between philosophy and sustainable development?
3. Why is there sustainable development without philosophy?
4. What are the transformations brought about by new technologies in today's society and culture?

1. What are the challenges regarding resources, populations, or social that today's society is facing?
2. What is SUSTAINABLE DEVELOPMENT? How is this concept defined?
3. Why are sustainable development principles important for future decision-making?
4. What are the key elements of the concept of sustainable development and how do they relate to each other?
5. Can people's personal (local) decisions cause or influence global change?

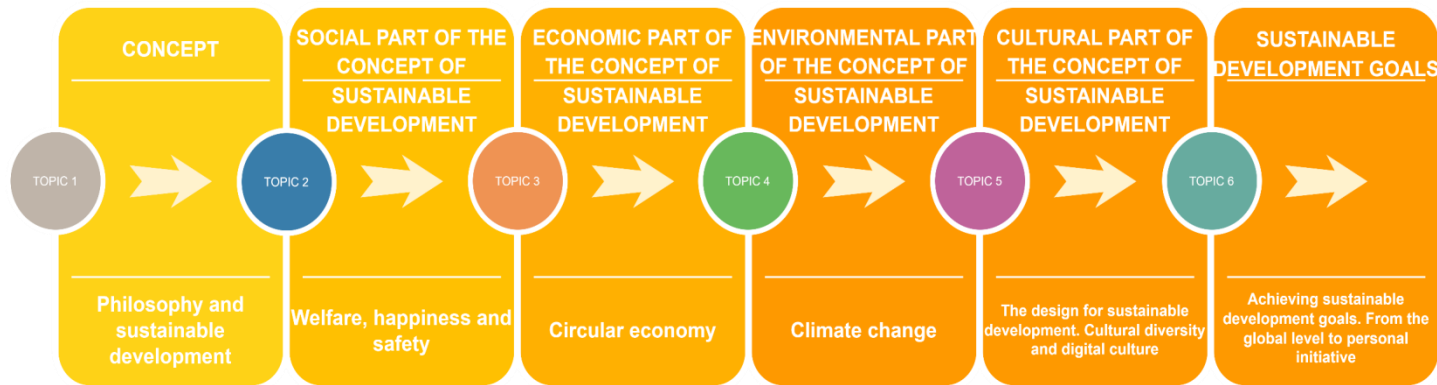




## TOPIC 2. Welfare, happiness and safety



1. What is SOCIAL WELFARE?
2. What is Individual Happiness?
3. What determines happiness and well-being?
4. What are the future challenges and trends?
5. What can I do?

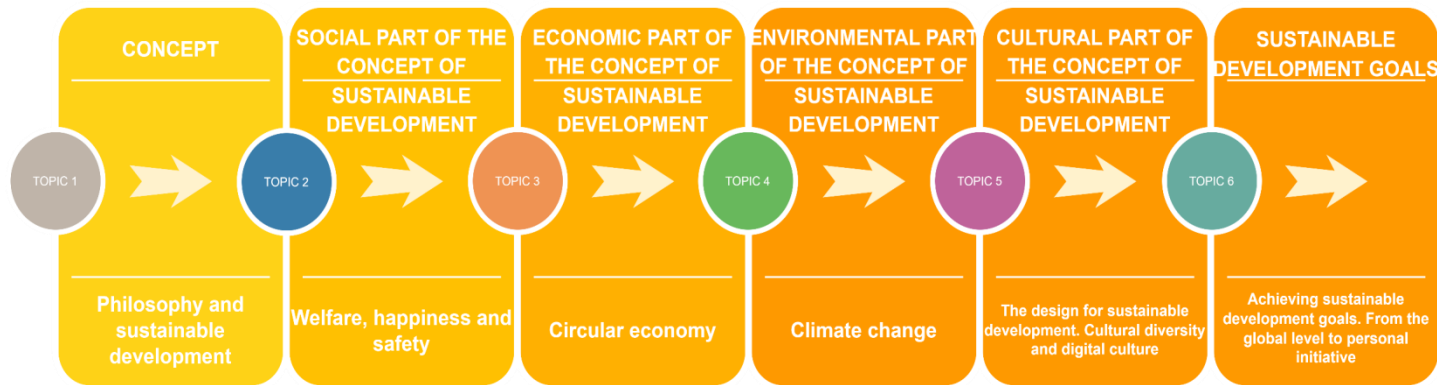


## TOPIC 3. Circular Economy



1. What is the Circular Economy and how is it different from other economies?
2. What is the national economic development strategy based on the principles of the circular economy?
3. How does the circular economy manifest itself in industries, companies?



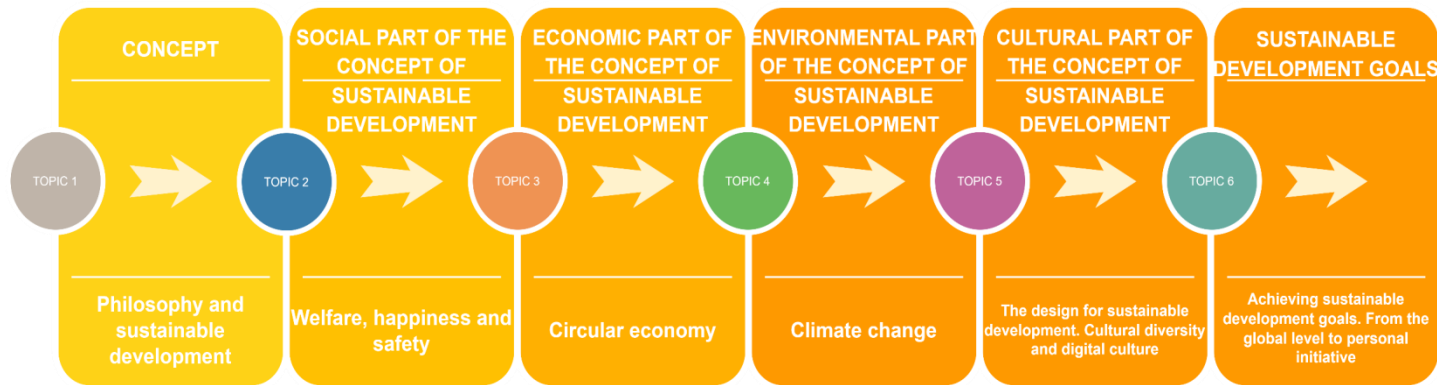


## TOPIC 4. Climate Change

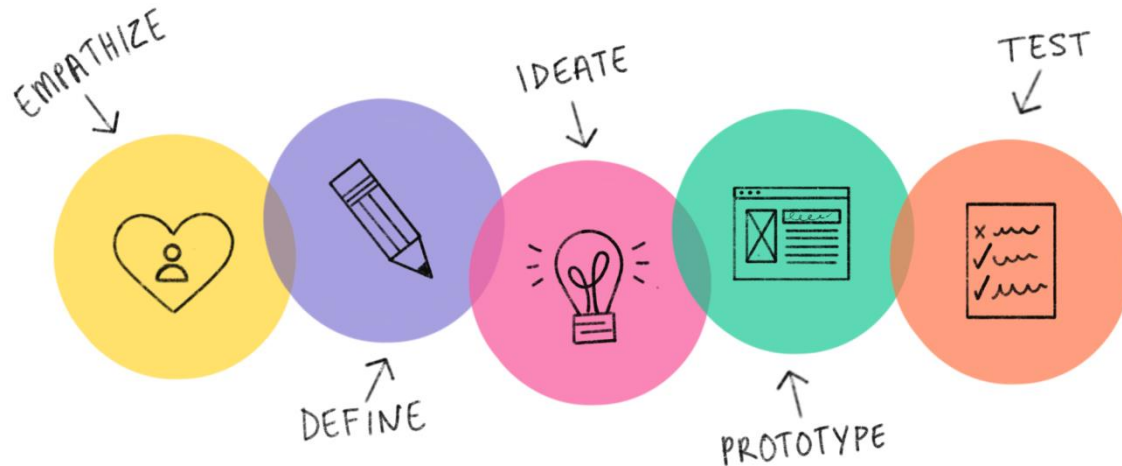


1. Why climate is changing?
2. What are consequences of climate change?
3. What areas of human activity the most effect climate change?
4. What are the main provisions of the Paris Agreement?
5. What personal choices are most effective in mitigating climate change?

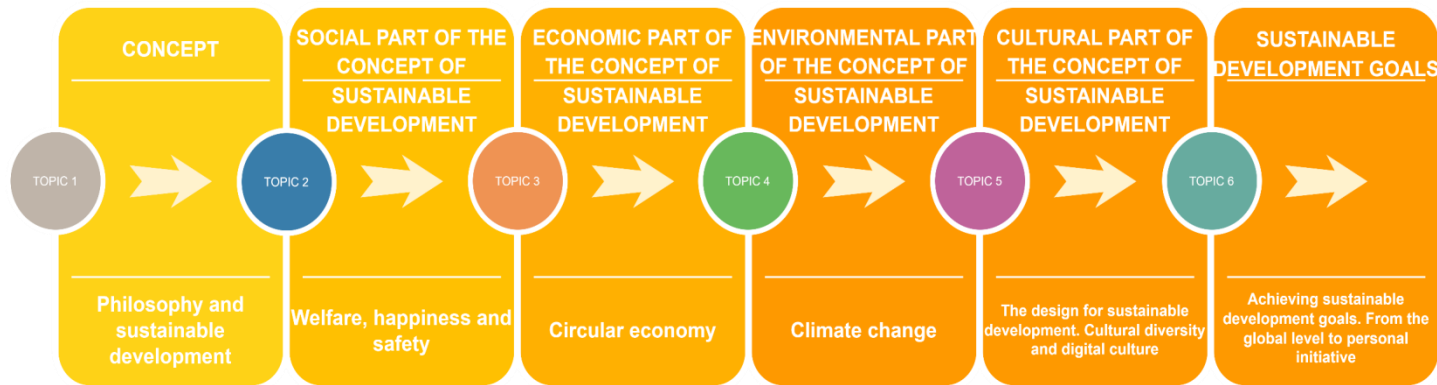




## TOPIC 5. Design for SD, cultural diversity and digital culture



1. What is DESIGN?
2. What is the role of culture in technological development?
3. What is the role of design in sustainable development?
4. What is a design oriented mindset and why is it important?



## TOPIC 6. Achieving SD goals: from the global level to personal initiatives



1. How do sustainable development issues and their levels differ between regions?
2. What are Lithuania's priorities for sustainable development?
3. Why the UN's 2030 Agenda for Sustainable Development is important at the national level?
4. How can the Sustainable Development Goals be implemented at city level?
5. How can each of us contribute to the goals of sustainable development?

# Organisation of teaching/learning



## How many hours will I be expected to study?

Theoretical lectures – 16 hours (stream lectures)

Practical exercises/seminars/workshops – 42 hours (small groups)

Laboratory works – 6 hours (the same groups and teacher as in the exercises)

Individual work – 96 hours

**Keep track of your schedule and check your KTU email!**

# Structure, organization and assessment of the module

All the necessary information will be provided in MOODLE

The screenshot shows the Moodle course interface for 'S183B001 Sustainable Development'. At the top, there's a navigation bar with tabs: 'Kursas', 'Parametrai', 'Dalyviai', 'Įvertinimai', 'Ataskaitos', and 'Daugiau'. Below this is a progress bar showing 'Bendra pažanga %' with a '0' indicator. An 'Announcements' section is visible. The main content area displays a grid of course modules, each with a document icon and a title. The modules are arranged in two rows of six. The first row includes: 'INFORMATION ABOUT COURSE AND TEACHERS', 'INTRODUCTION TO COURSE', 'Introductory workshop', 'Workshops' (with a sub-note 'Pasižymėta nuo besimokančiųjų'), '1. SUSTAINABLE DEVELOPMENT AND PHILOSOPHY', and '1.1. WHAT IS SUSTAINABLE DEVELOPMENT'. The second row includes: '1.1. Workshop 2022', '1.2. WHAT IS PHILOSOPHY', '1.2. Workshop', '2. WELFARE AND HAPPINESS', '2. Workshops', and '3. CIRCULAR ECONOMY'.

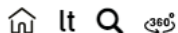
| Module Title                              |
|---|
| INFORMATION ABOUT COURSE AND TEACHERS     |
| INTRODUCTION TO COURSE                    |
| Introductory workshop                     |
| Workshops                                 |
| 1. SUSTAINABLE DEVELOPMENT AND PHILOSOPHY |
| 1.1. WHAT IS SUSTAINABLE DEVELOPMENT      |
| 1.1. Workshop 2022                        |
| 1.2. WHAT IS PHILOSOPHY                   |
| 1.2. Workshop                             |
| 2. WELFARE AND HAPPINESS                  |
| 2. Workshops                              |
| 3. CIRCULAR ECONOMY                       |

You can contribute to improving the information provided in the MOODLE environment!

Tell the lecturer what information you can't find, how to give it to you in a more understandable way.



# Attendance



- admissions ▾
- students
- alumni
- business
- for employees
- studies ▾
- intranet ▾
- news
- contacts

## University terminology and processes

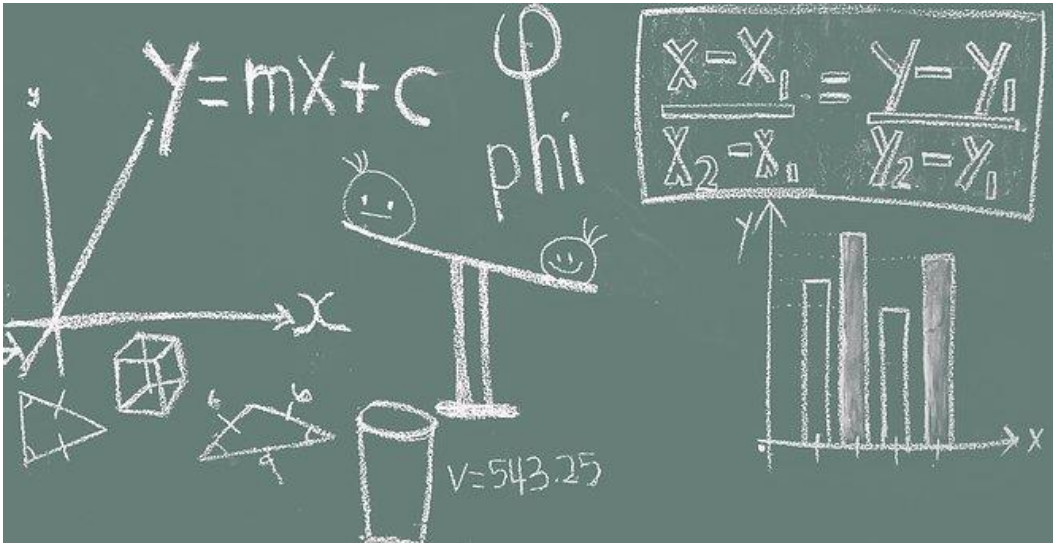
| STUDY PROGRAMME  | STUDY MODULE | STUDY CREDIT | THE ASSESSMENT SYSTEM | THE QUALITY OF STUDIES | TUITION FEES |
|--|--------------|--------------|-----------------------|------------------------|--------------|
| TIME OF LECTURES   | ATTENDANCE   |              |                       |                        |              |
| <p>Students' participation in the classes of the modules is obligatory: in laboratory works – 100%, in practical classes – min. 80%, in theoretical classes – min. 60%.</p> <p>The teacher sets specific attendance requirements that are introduced to students during the first class of the module.</p> <p>The attendance requirements are provided in the description of each study module. Check <a href="#">AIS &gt; "Studies" &gt; "Individual study plan"</a>.</p> |              |              |                       |                        |              |

Dalyvavimo modulio užsiėmimuose reikalavimai anglų kalba  
Laisvai įvedamas tekstas

Practical works: mandatory attendance at least in 90% of the classes. // Lectures: mandatory attendance at least in 90% of the classes.

/ Paskaitos: privalomas dalyvavimas ne

# Assessment of academic achievements



## Final evaluation consists of

- midterm exam (20%)
- solving problematic tasks (40%, four evaluated tasks 10% each)
- laboratory work (design thinking) report (10%)
- exam (30%)

# Questions and answers

? & !

